

1. ABACUSBIO LTD



International leaders in the application of science and technology in primary food production.

2. ASKBIO EUROPE



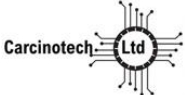
Leading the way in end to end gene therapy technology and AAV therapeutic assets. European headquarters of the AskBio family following acquisition of Synpromics Ltd.

3. BETA BUGS LTD



Insect breeding company that creates high performance breeds for the rapidly growing 'insects-as-protein' sector.

4. CARCINOTECH LTD



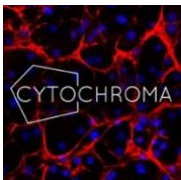
Cancer microfluidics technology company, manufacturing 3D printed bio chips using patient specific stem cells for personalised cancer drug testing, discovery and trials.

5. CENSO BIOTECHNOLOGIES LTD



Enabling the discovery and development of new targeted treatments for disease by utilising the power of stem cells.

6. CYTOCHROMA LTD



Producing stem cell derived liver models and tailored toxicity testing to support a variety of life science companies in the acceleration of drug discovery.

7. DURADIAMOND SOFTWARE LTD



Developing proprietary, farmer focused business and market intelligence solutions for domestic and international livestock markets including iLivestock and eWeigh.

8. FOOD CHAIN ENTERPRISES LTD



Providing global business consulting services and comprehensive support to integrated food production and manufacturing to optimise processed and profit.

9. GREENGAGE ENLIGHTENED FARMING LTD



Delivering LED agricultural lighting, sensors and control systems for improved farming environments for poultry, pigs and cattle.





10. INGENZA LTD

World leader in the application of industrial biotechnology and synthetic biology; and established inABLE®, a proprietary combinatorial genetic platform.



11. KAJEKA LTD

Spin out from The Roslin Institute, providing visual software solutions for big data and network analysis.



12. LANDCATCH LTD

Part of Hendrix Genetics, a global multi-species breeding company with activities in layer poultry, turkeys, pigs and now aquaculture.



13. MV DIAGNOSTICS LTD

Development and provision of innovative immunoassays and reagents for use in clinical and research laboratories worldwide.



14. N2 APPLIED LTD

Technology producing environmental-friendly nitrogen fertiliser to enable livestock farmers to produce their own fertiliser from manure, air and renewable energy.

15. N2 PHARMACEUTICALS LTD



Developers of a unique injectable drug N2-01, proven to dramatically increase the effectiveness of artificial insemination of dairy cattle, a major problem in agriculture.



16. PULCEA LTD

Improving animal welfare and sustainability within the aquaculture industry utilising marine physics in a manner capable of delivering unique technical innovations.

17. ROSLIN TECHNOLOGIES LTD



Delivering impact from cutting edge innovations in animal health and providing opportunities for investors looking to capitalise in food and agricultural products.

18. TROPICAL ANIMAL GENETICS LTD



Industry-leading reproductive technologies and expertise to meet the growing needs for having superior genetics for farmers and breeders.



HOT DESKING

19. CITY REGION DEAL – AGRITECH SECTOR TEAM LEAD



Generating and collation of local and global data through deployment of a Campus-wide network whilst seeking to establish a global location of Agritech excellence; part of a project to leverage world-class research institutes and commercialisation facilities.



20. DEPARTMENT FOR INTERNATIONAL TRADE – TRIPLE A SPECIALIST

Department for International Trade (Scottish Office) commercial specialist in Animal Science, Aquaculture, Agri-Tech and Bioeconomy, actively engaging with potential R&D and driving inward investment to the UK.

21. EDINBURGH GENOMICS



World leading genomics and bioinformatics facility, within the University of Edinburgh, delivering high volume data and cutting-edge analyses.

22. MIDLOTHIAN SCIENCE FESTIVAL



Annual science festival across Midlothian each October offering a programme of fun, interesting and accessible events and activities for all - many free to attend.

23. MIDLOTHIAN SCIENCE ZONE



Partnership group of science, technology and innovation parks; research institutes; academic institutions and tenant companies, all located within Midlothian.



JOIN US?

"Since opening in August 2017, we're well on our way to achieving a target occupancy of 80% attracting up to 30 tenants. Those companies will ideally be strategically collaborating with The Roslin Institute, Dick Vet School and others on Campus."

John Mackenzie, CEO, Roslin Innovation Centre

