



**ABACUSBIO LTD**

International leaders in the application of science and technology in primary food production.



**BETA BUGS**

Insect breeding company that creates high performance breeds for the rapidly-growing 'insects-as-protein' sector.



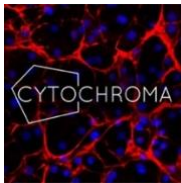
**CASTA SPES TECHNOLOGIES LTD**

Build agile, autonomous robots for perimeter surveillance to keep people, property, grounds, farmland and livestock safer.



**CENSO BIOTECHNOLOGIES LTD**

Enabling the discovery and development of new targeted treatments for disease by utilising the power of stem cells.



**CYTOCHROMA**

Producing stem cell derived liver models and tailored toxicity testing to support a variety of life science companies in the acceleration of drug discovery.



**GREEN BIOACTIVES**

World leading genomics and bioinformatics facility delivering high volume data and cutting-edge analyses.



**GREENGAGE ENLIGHTENED FARMING LTD**

Delivering LED agricultural lighting, sensors and control systems for improved farming environments for poultry, pigs and cattle.



**INGENZA LTD**

World leader in the application of industrial biotechnology and synthetic biology; and established inABLE®, a proprietary combinatorial genetic platform.



**KAJEKA LTD**

Spin out from The Roslin Institute, providing visual software solutions for big data and network analysis.





**LANDCATCH LTD**

Part of Hendrix Genetics, a global multi-species breeding company with activities in layer poultry, turkeys, pigs and now aquaculture.



**MV DIAGNOSTICS LTD**

Development and provision of innovative immunoassays and reagents for use in clinical and research laboratories worldwide.



**N2 PHARMACEUTICALS LTD**

Developers of a unique injectable drug N2-01, proven to dramatically increase the effectiveness of artificial insemination of dairy cattle, a major problem in agriculture.



**ROSLIN TECHNOLOGIES LTD**

Agriculture biotechnology company and the commercialisation arm of The Roslin Institute and University of Edinburgh's Royal (Dick) School of Veterinary Studies.



**SYNPROMICS LTD**

Leading developer of synthetic promoters and provider of gene expression solutions to the biotech industry.



**TROPICAL ANIMAL GENETICS LTD**

Industry-leading reproductive technologies and expertise to meet the growing needs for having superior genetics for the farmers and breeders.



**MIDLOTHIAN SCIENCE FESTIVAL**

Launched in 2012, the Festival provides a programme of fun, interesting and accessible science events and activities across Midlothian each October.



**MIDLOTHIAN SCIENCE ZONE**

Partnership group of science, technology and innovation parks; research institutes; academic institutions and tenant companies, all located within Midlothian.



**JOIN US?**

*"We're looking to attract up to 30 tenants over the next couple of years. Those companies will ideally be strategically collaborating with The Roslin Institute, Dick Vet School and others on Campus."*

John Mackenzie, CEO, Roslin Innovation Centre